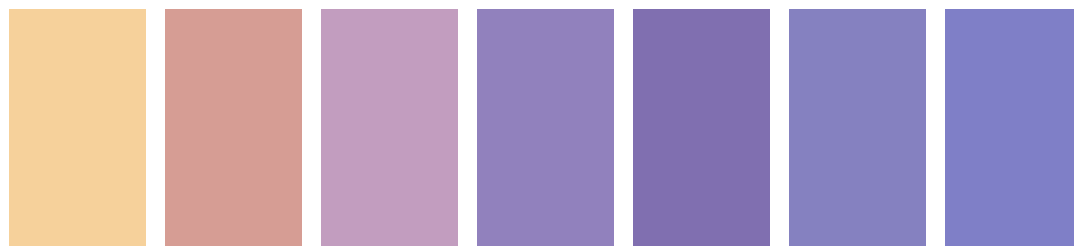


# Pergalite™ Pigments

**Pergalite**  
(1% pigment)



Solenis Trade Name	PERGALITE YELLOW OXIDE M-E	PERGALITE OXIDE RED M-EF	PERGALITE VIOLET NZ	PERGALITE VIOLET VT-L	PERGALITE VIOLET NGVT-L	PERGALITE VIOLET AV-L	PERGALITE VIOLET M
L*	85.8	69.9	68.9	57.4	50.8	56.6	56.0
a*	5.6	20.0	20.0	19.0	21.2	16.0	17.2
b*	31.4	12.9	-12.6	-29.6	-32.2	-32.1	-37.5
Lightfastness	8	8	7-8	6-7	6-7	3-4	1-2
Viscosity mPas	<=1000	<=900	<=500	<=500	<=300	<=500	<=100
Sodium Carbonate 10%	5	5	5	5	5	4-5	4-5
Caustic Soda 10%	2-3	2-3	2-3	2-3	2-3	2-3	2-3
Sulphuric Acid 5%	5	5	5	5	5	3-4	2



Solenis Trade Name	PERGALITE BLUE R-LW	PERGALITE BLUE NGR-LW	PERGALITE YELLOW G-L	PERGALITE YELLOW GFT	PERGALITE YELLOW ET	PERGALITE RED G-L	PERGALITE RED BF-L
L*	67.9	63.2	89.7	88.4	84.7	69.4	73.2
a*	-15.2	-13.4	-5.0	-0.8	9.4	39.0	30.7
b*	-28.9	-32.6	50.2	59.8	63.5	11.2	1.6
Lightfastness	7-8	7-8	4-5	3	4	4-5	5
Viscosity mPas	<=300	<=300	<=250	<=500	<=500	<=100	<=200
Sodium Carbonate 10%	5	5	5	5	5	5	5
Caustic Soda 10%	2-3	2-3	2-3	2-3	2-3	2-3	2-3
Sulphuric Acid 5%	5	5	5	5	5	5	5

## Pergalite

(1% pigment)



Solenis Trade Name	PERGALITE GREEN 2GT	PERGALITE GREEN GT-L	PERGALITE BLACK 2B-LN	PERGALITE BLACK 05L
L*	74.9	68.8	46.8	47.2
a*	-38.6	-15.5	0.5	0.6
b*	4.4	15.9	1.6	1.8
Lightfastness	7-8	5-6	7-8	7-8
Viscosity mPas	<=800	<=200	<=1600	<=1000
Sodium Carbonate 10%	5	5	5	5
Caustic Soda 10%	2-3	2-3	2-3	2-3
Sulphuric Acid 5%	5	4-5	5	5

## Pergalite Blends

	Bluish White	Neutral White	OBA White
Brilliant	Pergalite™ Blue MB 50 A	Pergalite™ Violet MB 60 A	Pergalite™ Violet MB 70 A
Lightfast	Pergalite™ Blue MK 50-L	Pergalite™ Violet MK 60-L	Pergalite™ Violet MK 70-L
FDA compliant	Pergalite™ Blue IFA-NA	Pergalite™ Violet MF 60	Pergalite™ Violet MF 70

## Application Conditions:

70% bleached Pine/ 30% bleached Beech

30°SR

0,1% Pergafix™ AP9397 fixative

1% Pergalite™

0,03% PerForm™ PC402L retention aid

## Furnish

L\* 93,7

a\* -0,5

b\* 4,5